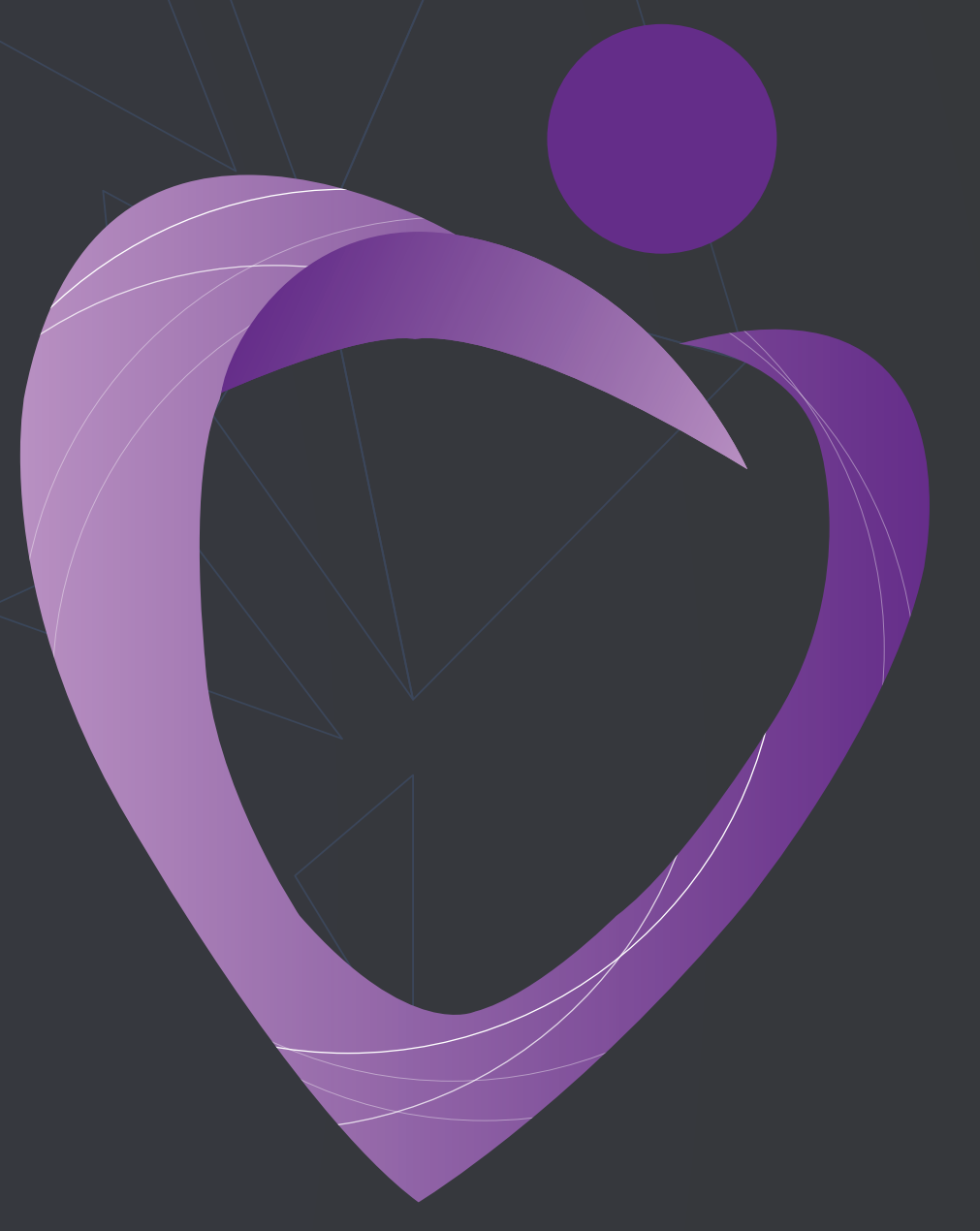




AMMT



4th SEHA Vascular Conference

Improving grafting in peripheral, aortic, and vascular access procedures

PRODUCTS LIST



ACUSEAL

CARDIOVASCULAR PATCH

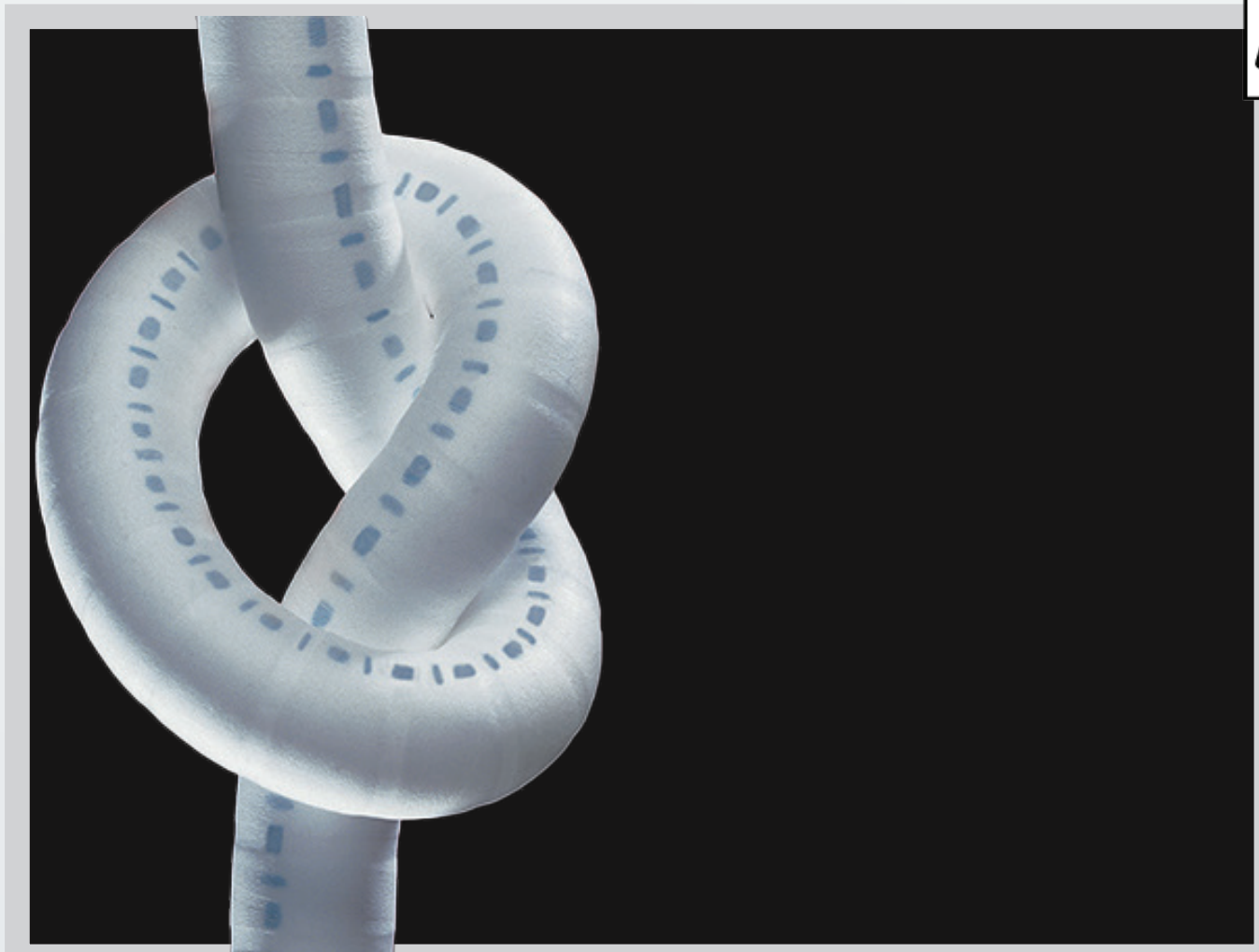
The GORE® ACUSEAL Cardiovascular Patch is a high strength, low thrombotic, synthetic patch designed to decrease suture line bleeding in cardiovascular repair and reconstruction procedures.



ACUSEAL

VASCULAR GRAFT

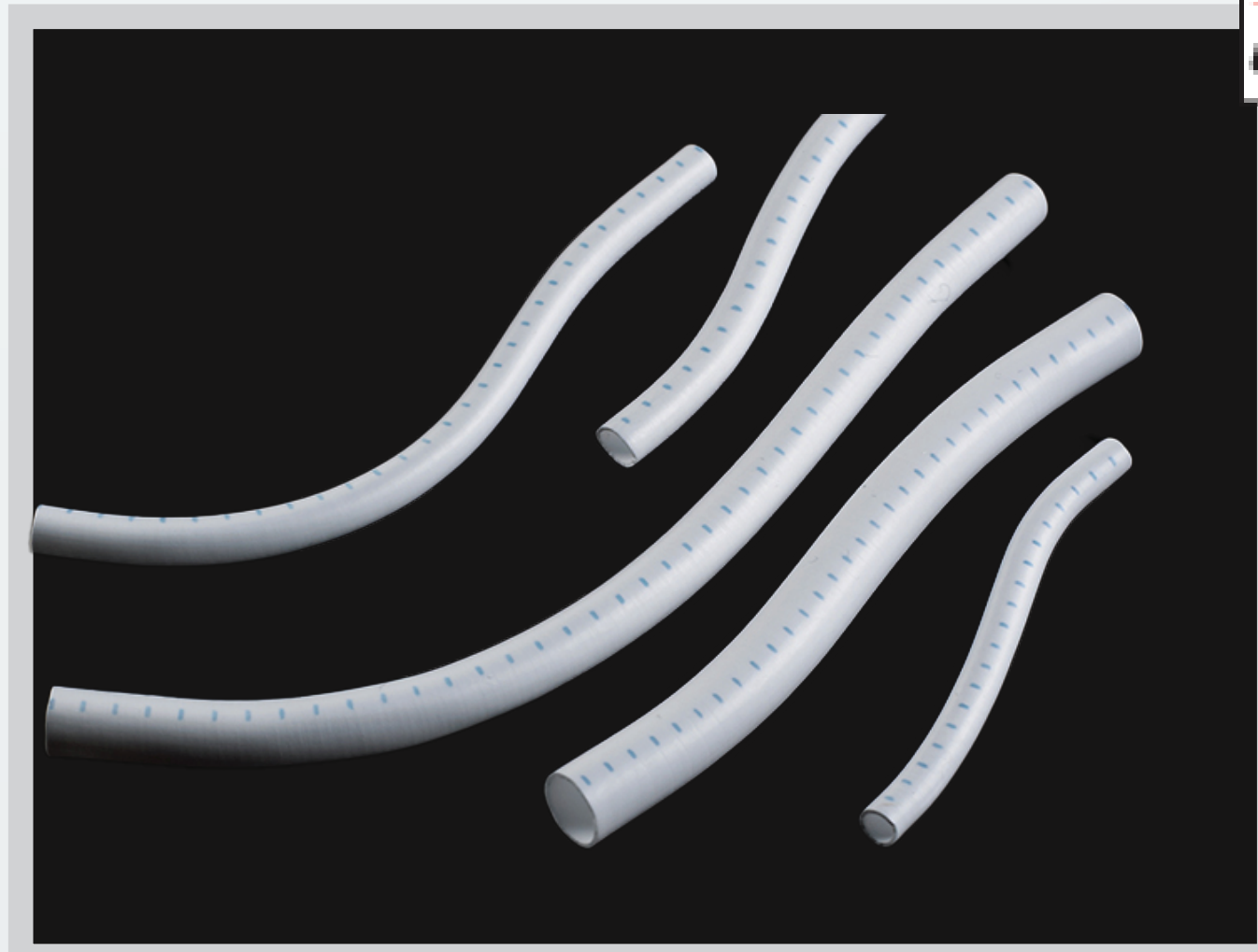
The GORE® ACUSEAL Vascular Graft allows for earlier removal or avoidance of a central venous catheter (CVC), providing an alternative for your hemodialysis patients.



INTERING®

VASCULAR GRAFT

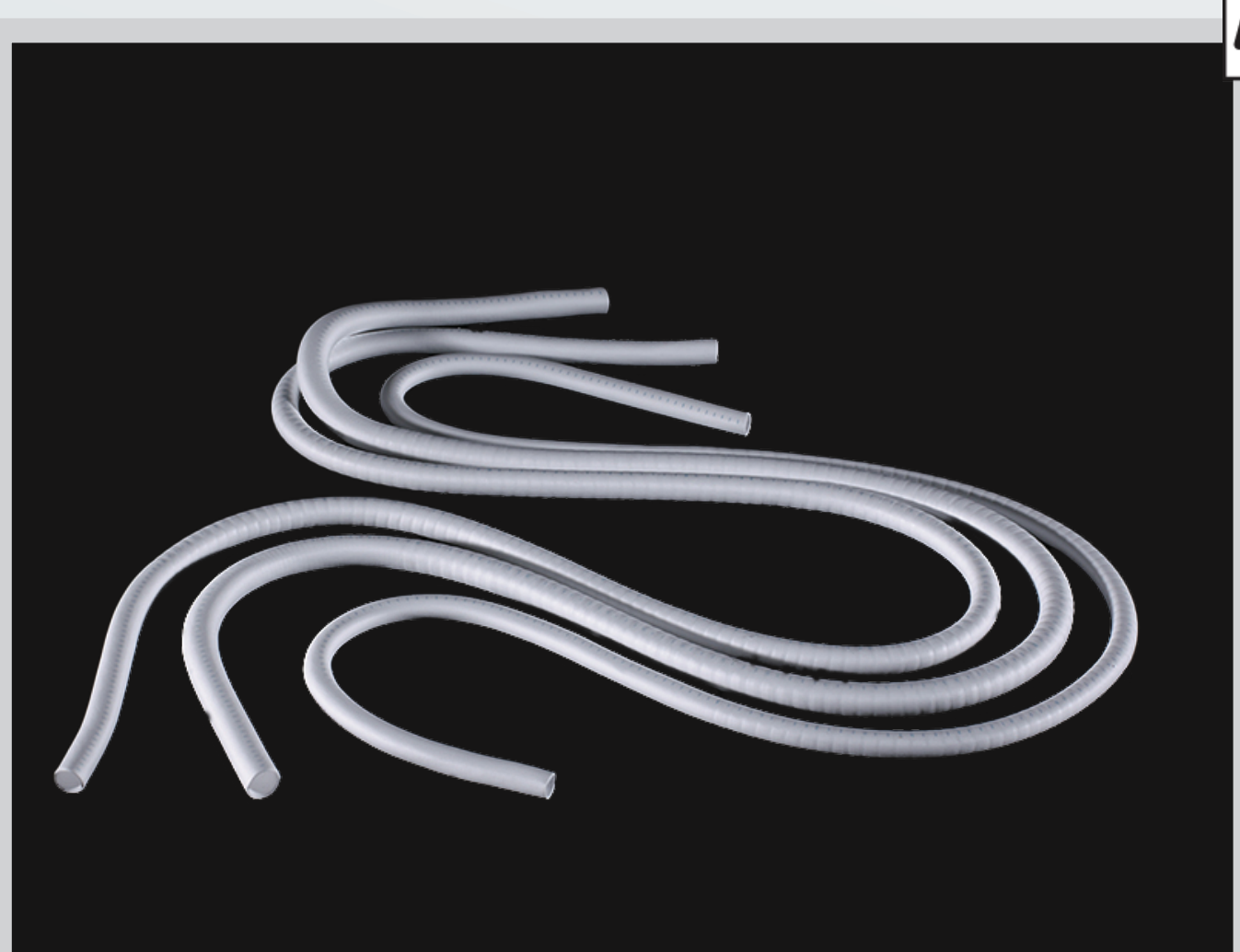
The GORE® INTERING® Vascular Graft is designed for surgical bypass or vascular access with a reduction in trauma and complications associated with external reinforcement.



PROPATEN®

VASCULAR GRAFT

The GORE® PROPATEN® Vascular Graft configured for Pediatric Shunt is the graft of choice by surgeons worldwide for palliative pediatric cardiac procedures.



PROPATEN®

VASCULAR GRAFT

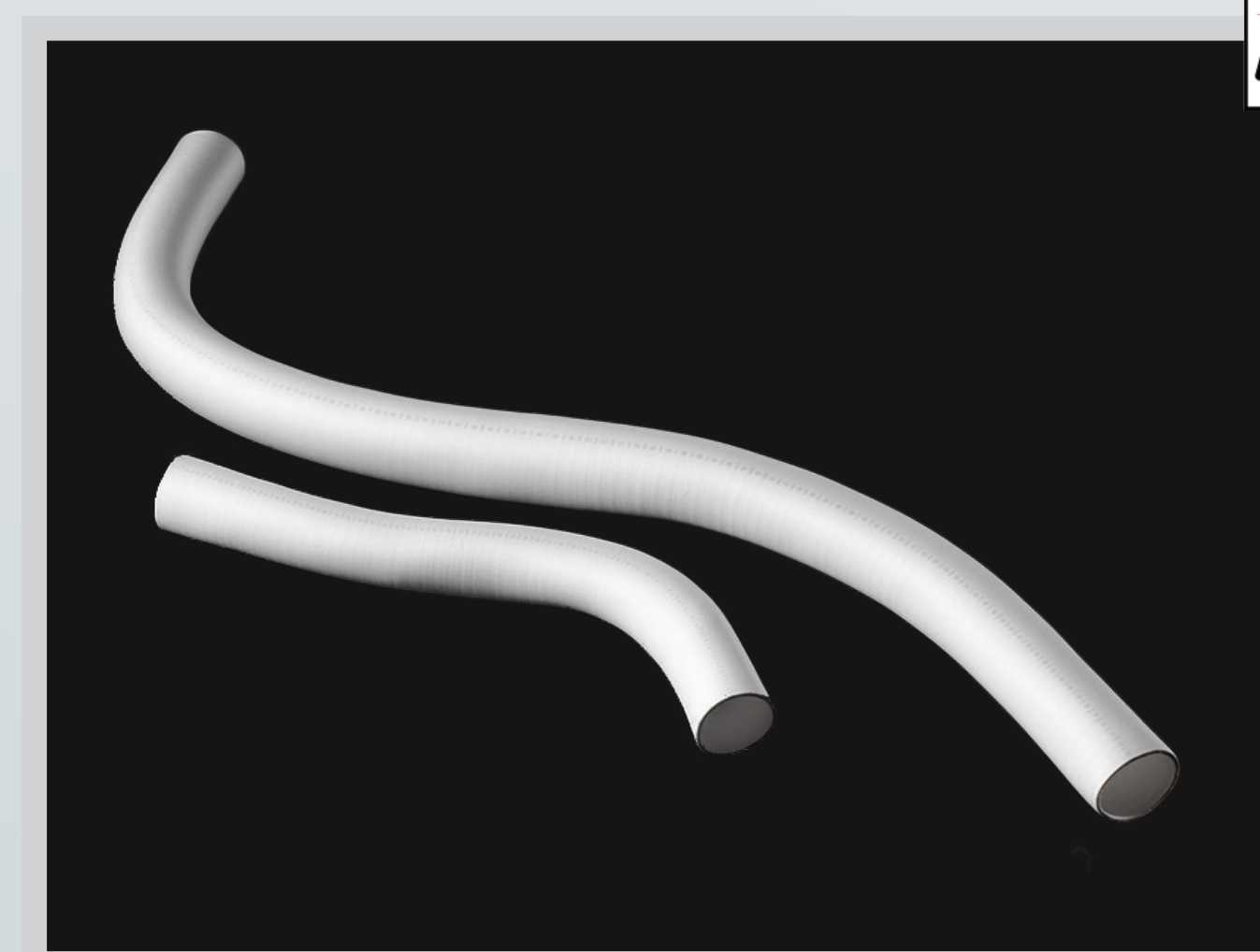
GORE® PROPATEN® Vascular Graft, a leading prosthetic vascular graft for lower extremity revascularization, is specifically designed to reduce the risk of acute graft thrombotic failure.



GORE-TEX® STRETCH

BIFURCATED
VASCULAR GRAFT

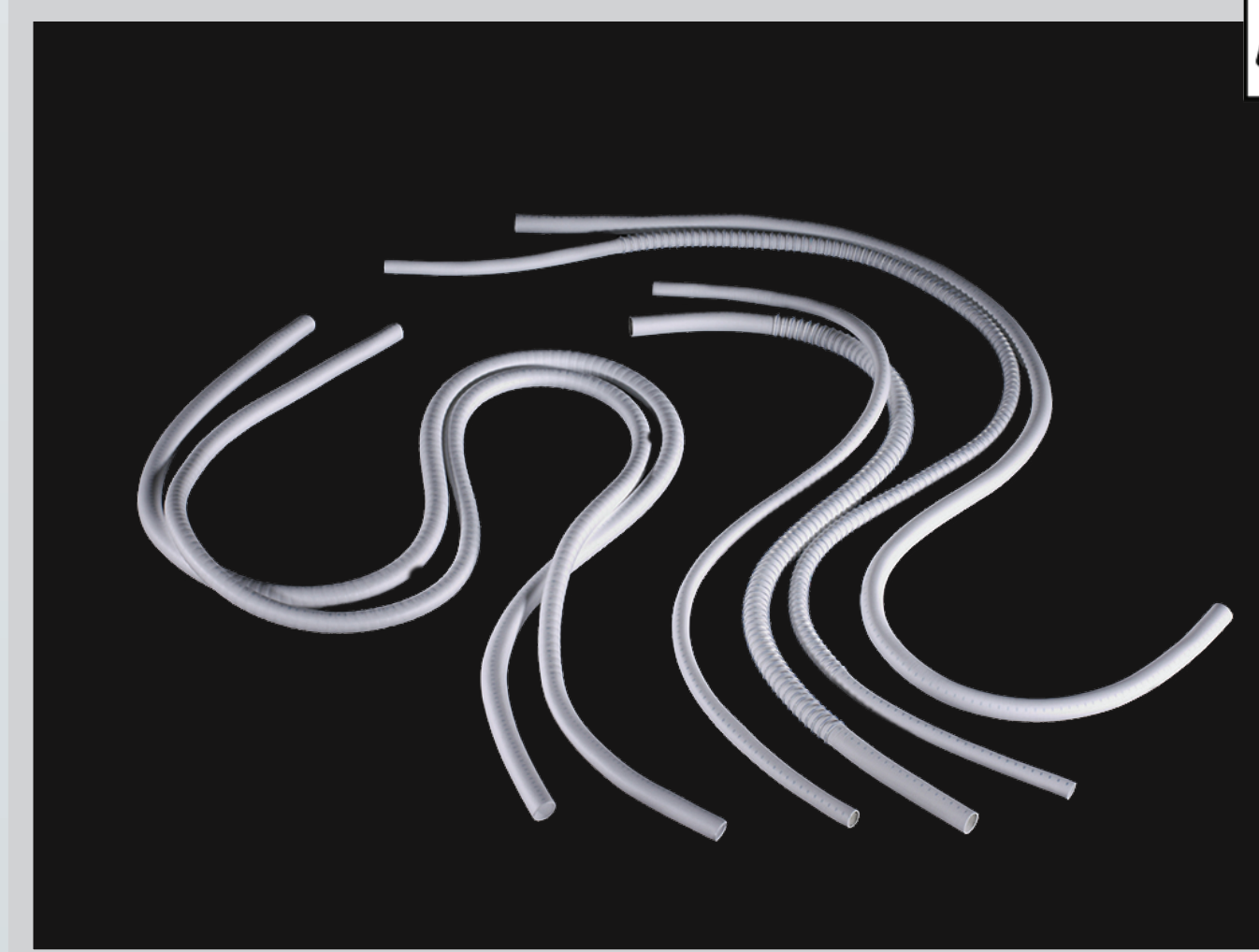
In vascular surgery, superior graft performance is essential. A vascular graft must be inert and biocompatible, as well as strong, conformable, and easy-to-handle.



GORE-TEX® STRETCH

VASCULAR GRAFT

GORE-TEX® Stretch Vascular Grafts have met the challenges of the most demanding vascular procedures. Recognized for exceptional performance and quality.



GORE-TEX® STRETCH

VASCULAR GRAFT

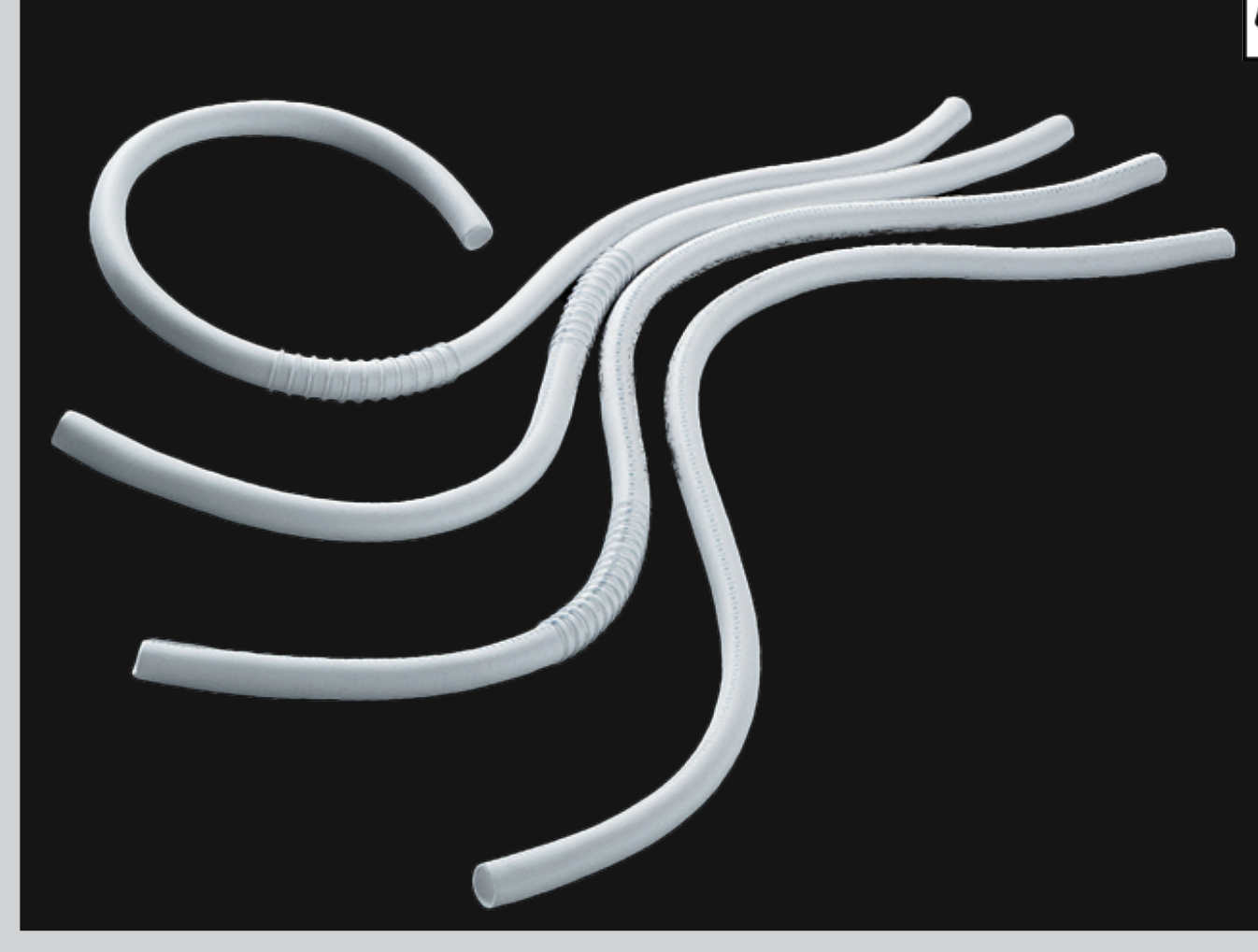
GORE-TEX® Vascular Graft has long been the prosthetic of choice among vascular surgeons worldwide.



GORE-TEX® SUTURE

CHORDAE TENDINEAE

Repair and replacement of chordae tendineae is a critical, exacting intracardiac procedure. GORE-TEX® Suture has been used successfully in chordae tendineae procedures for more than 20 years.



GORE-TEX® STRETCH

VASCULAR GRAFT

In vascular surgery, superior graft performance is essential. A vascular graft must be inert and biocompatible, as well as strong, conformable and easy-to-handle.